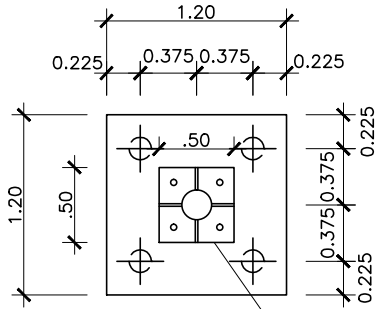




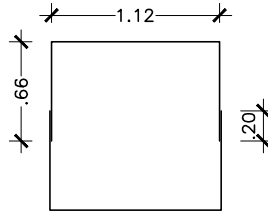
SECRETARIA DE EDUCAÇÃO DO RIO DE JANEIRO
 SECRETARIA DE EDUCAÇÃO DO RIO DE JANEIRO

GOVERNADOR: RENATO CASAGRANDE		SECRETÁRIO DE EDUCAÇÃO: VITOR AMORIM DE ANGELO	
DETALHE: TABELA DE BASQUETE		PRANCHA: 06/07	

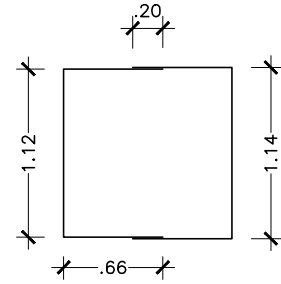
BLOCO DE FUNDAÇÃO



CHAPA SOLDADA NO TUBO
 esp.: >16mm



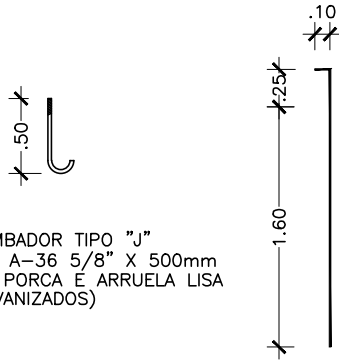
N-1 SUP. 7ø 8 C/20 C.245
 N-2 INF. 7ø 8 C/20 C.247



N-1 SUP. 7ø 8 C/20 C.245
 N-2 INF. 7ø 8 C/20 C.247

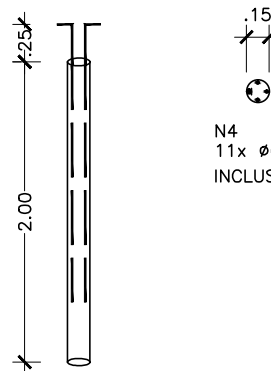
COBRIMENTO DAS ARMADURAS
 - BLOCO DE FUNDAÇÃO= 4cm
 - PILAR - 4cm
 CONCRETO fck 25MPa
 AÇO: CA-50

ESTACA BROCA ø 20cm (4x)

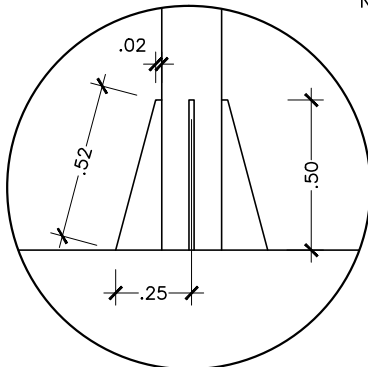


CHUMBADOR TIPO "J"
 ASTM A-36 5/8" X 500mm
 COM PORCA E ARRUELA LISA
 (GALVANIZADOS)

N3-4ø 10.0-comprimento 1,95m



N4
 11x ø6.3-c/15cm - 0,57m
 INCLUSO R\$ BROCA



CHAPA DE CONTRAVENTAMENTO esp.: 5mm

N	ø	Q	COMPRIMENTO (m)		PESO (Kg)
			UNITARIO	TOTAL	
N1	8.0	14	245	34,30	13,72
N2	8.0	14	2,47	34,58	13,83
N3	10.0	16	1,95	31,20	19,65
N4	6.3	44	0,57	25,08	6,27
TOTAL:					53,46